



SEA™

SUBSEA ELECTRIC ACTUATION

Reducing costs and simplifying control systems

As the upstream oil and gas industry looks to develop hydrocarbons in ever more challenging environments, new technologies are providing solutions for fields that previously would have been considered uneconomical to develop. Longer tie backs to host platforms and deeper water depths create additional challenges. Subsea electric actuation is one way to meet those challenges enabling remote hydrocarbons to be exploited safely, with less risk of pollution and at lower cost.

The Subsea Electric Actuator, SEA™, from BEL Valves is the ideal solution to actuation in these demanding conditions.

SPECIFICATION

Valve compatability	Gate, ball and globe
Pressures	Up to 15,000 psi
Water depths	Up to 3000 m
Control Standard	CANBus/MODBus
Valve Sizes	From 1/2" to 42"
Supply	AC or DC
Standard	API 6A/17D, ISO 10423, ISO 13628, ISO 14723

OPERATIONAL BENEFITS

- Eliminates the need for hydraulic fluids and associated cleanliness
- Facilitates condition monitoring
- Reduces the size and weight of the umbilical
- Enables longer step-outs and deeper water

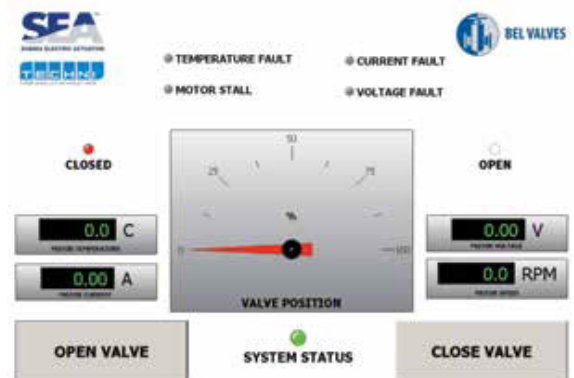
ELIMINATES

- Initial fluid fill
- Replacement fluid fill
- Subsea accumulators
- Venting to sea

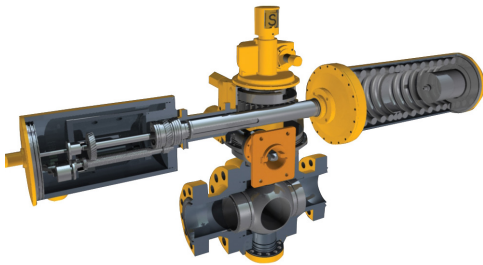
REDUCES

- Overall weight and space
- Maintenance and repairs
- Topside host facilities
- Downtime

SCADA Interface



Screenshot example



8" 5000 psi subsea ball valve with electric actuator

APPLICATIONS

- Manifold valving
- Subsea isolation valves
- High integrity pipeline protection systems
- Pipeline end termination
- Pipeline end manifold
- Deep water
- Gas export pipeline
- Linear or quarter turn
- Fail safe or fail as is



ENGINEERING EXCELLENCE

MANUFACTURING EXPERTISE

PROJECT DELIVERY

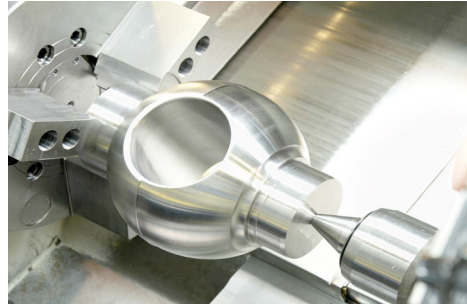
FLEXIBILITY OF APPROACH

CONFIDENCE

BEL Valves are leaders in the design and manufacture of critical subsea and surface valves, actuators and controls for the oil and gas industry worldwide.

Specific design and engineering focus is placed on high pressure and high integrity applications to ensure the delivery of optimum solutions for the most hostile environments.

Our enabling technologies ensure the most complex systems can be developed in a reliable and safe manner.



Experience includes:

- Bonga
- Longhorn
- Shah Deniz
- Tengiz
- Kashagan
- KGD6
- Gorgon
- West Delta Deep
- Kizomba
- Plangas
- Tyrihans
- Affleck
- Usan
- Schiehallion

Contacts

Address:
St Peters
Newcastle Upon Tyne
United Kingdom
NE6 1BS

Telephone:
+44 (0) 191 265 9091

Fax:
+44 (0) 191 276 3244

Email:
enquiry@belvalves.com

@belvalves
 bel-valves-ltd
 BEL.Valves

